

# GLACIER

291 Waterford Heights • Waterford, Chestermere



1180 sq ft



3 bedrooms



2.5 bathrooms

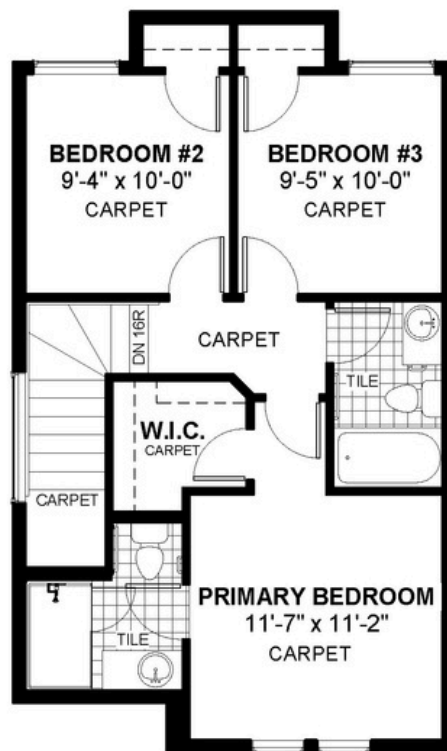
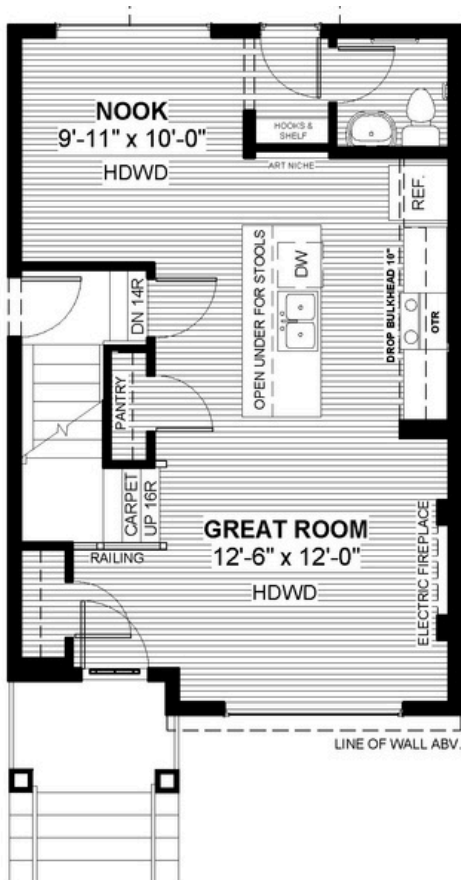


20'



## FEATURES

- ✓ Basement Side Entry
- ✓ Rear Parking Pad
- ✓ 9' Main Floor Ceiling
- ✓ Quartz Countertops
- ✓ Electric Fireplace
- ✓ Eng. Hardwood Main Floors
- ✓ Built-In Hooks/Shelf to Rear
- ✓ Walk-in closet
- ✓ Art Niche in Kitchen



## NOTES



**DOUGLAS HOMES**  
REMARKABLE WITHIN REACH

\*Price includes lot&gst. Price, features & plan are subject to change at any time. All plans/designs are the exclusive property of Douglas Homes Ltd.

[www.douglashomes.net](http://www.douglashomes.net) | [waterford@douglashomes.net](mailto:waterford@douglashomes.net) | 587.391.7812