

**QUICK
POSSESSION
GLENDALE**


111 Sundown Crescent,
Cochrane

Fi & Nam Traimany

✉ sunsetridge@douglashomes.net

☎ 587.391.7814

 2,224 sq. ft.

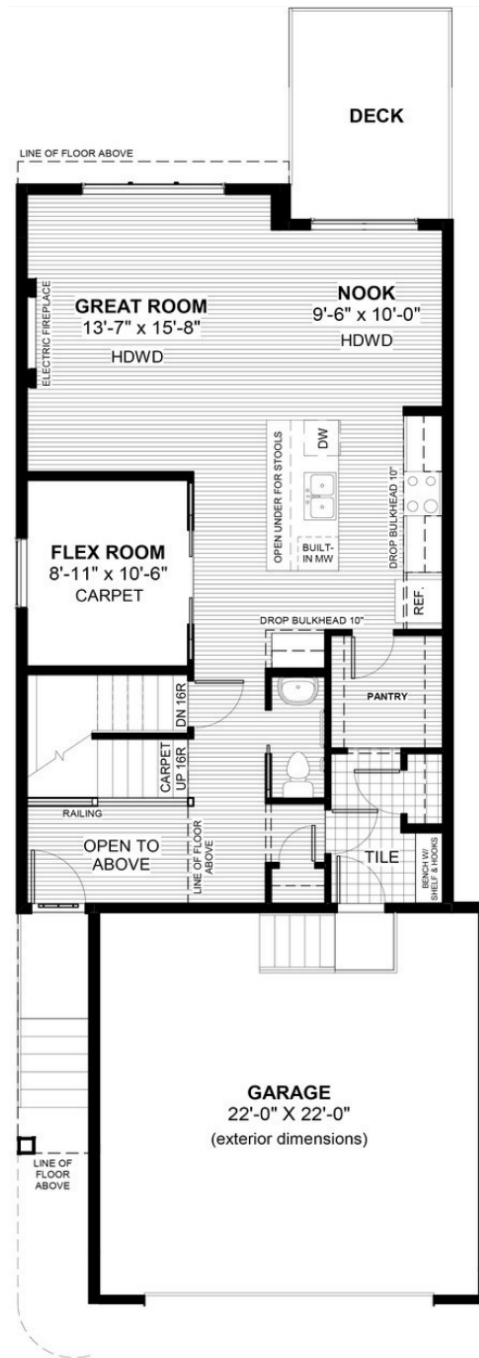
 4 Bedrooms

 2.5 Bathrooms

 24'

FEATURES

- 9' Walk-out Basement
- Oversized 2 Car Garage
- Electric Fireplace
- 9' Main Floor Ceiling
- Quartz Countertops
- Eng. Hardwood on Main Floor
- Main Floor Flex Room
- Upper Floor Loft
- Walk Through Pantry
- Double Vanities to Ensuite
- Walk-in Closets
- Treated Wood Deck



Price includes lot & GST. Price, features & plan are subject to change at any time.
All plans/designs are the exclusive property of Douglas Homes Ltd.

