

**QUICK
POSSESSION**

ANNETTE

12 Waterford Glen
Waterford, Chestermere

Connie Buenaventura

✉ waterford@douglashomes.net

☎ 587.391.7812



1,200 sq. ft.



2 Bedrooms



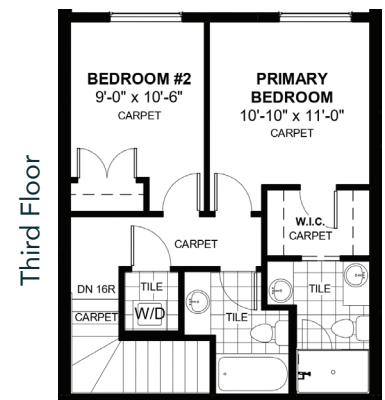
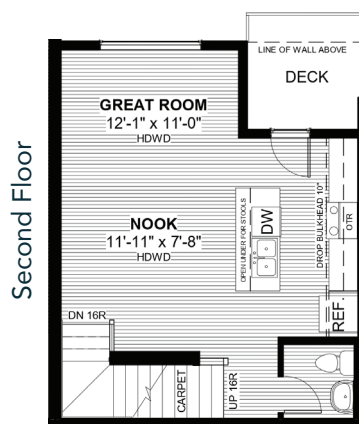
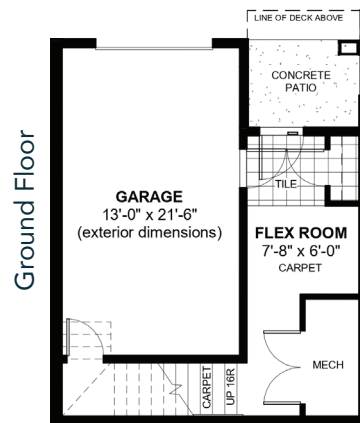
2.5 Bathrooms



22'

FEATURES

- Back-to-Back Townhome
- No Condo Fees
- Single Car Garage
- Full Landscaping
- 9' Main Floor Ceiling
- Quartz Countertops
- Eng. Hardwood on Main Floor
- Upper Floor Laundry



Price includes lot & GST. Price, features & plan are subject to change at any time. All plans/designs are the exclusive property of Douglas Homes Ltd.

