

## QUICK POSSESSION Fernie 1

287 Waterford Heights  
Waterford, Chestermere

Connie Buenaventura

✉ waterford@douglashomes.net

☎ 587.741.0641



1,289 sq ft



3 bedrooms



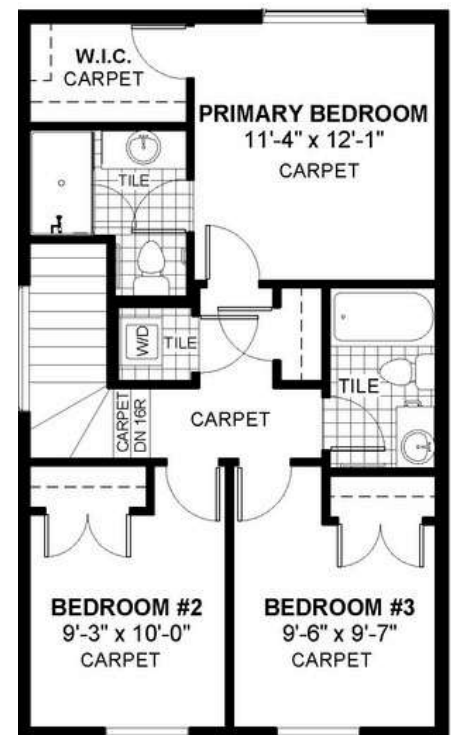
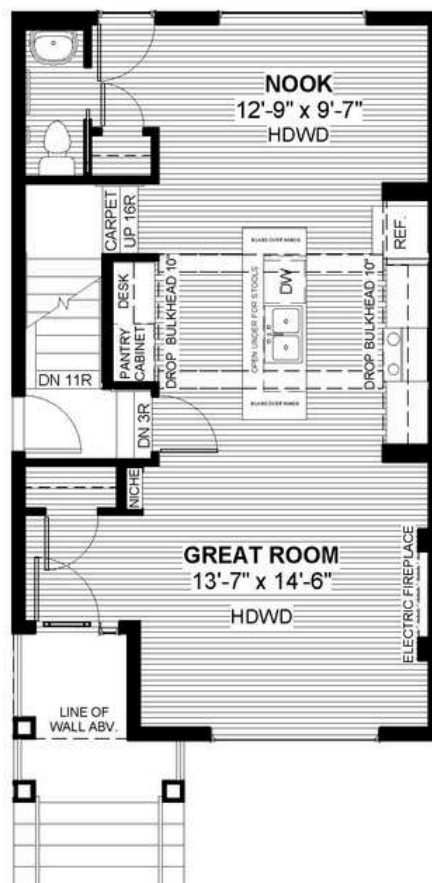
2.5 Bathrooms



20'

### FEATURES

Basement Side Entry  
Rear Parking Pad  
9' Main Floor Ceiling'  
Quartz Countertops  
Electric Fireplace  
Eng. Hardwood Main Floors  
Upper Floor Laundry  
Large Kitchen Island  
Walk-in Closet  
Tile to Baths/Laundry



Price includes lot & GST. Price, features & plan are subject to change at any time.  
All plans/designs are the exclusive property of Douglas Homes Ltd.

