

GRAND VALLEY

115 Sundown Crescent • Sunset Ridge, Cochrane



1858 sq ft



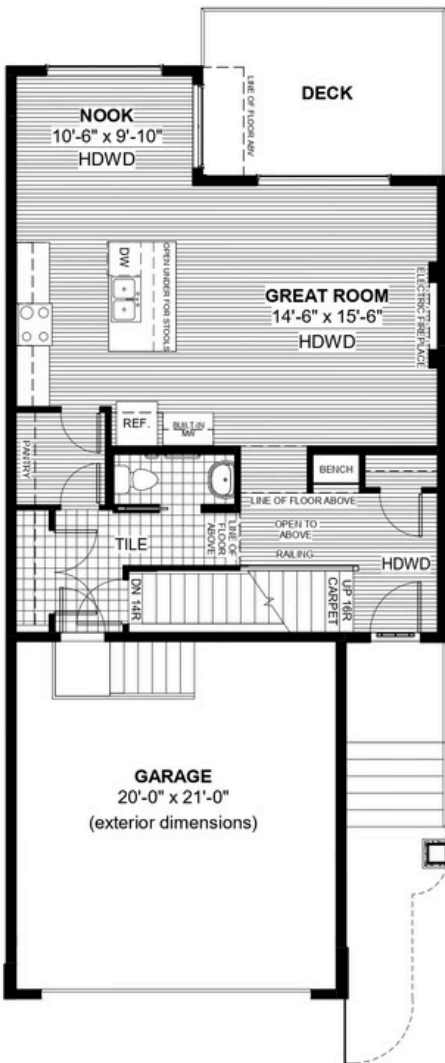
3 bedrooms



2.5 bathrooms



26'



FEATURES

- ★ 9' Walk-out Basement
- ✓ Treated Wood Deck
- ✓ Quartz Countertops
- ✓ Electric Fireplace
- ✓ Eng. Hardwood Main Floors
- ✓ Walk Through Pantry
- ✓ Double Vanities to Ensuite
- ✓ Upper Floor Loft
- ✓ Walk-in Closet
- ✓ Tile to Baths/Laundry
- ✓ Built-in Bench to Entrance



NOTES



DOUGLAS HOMES

REMARKABLE WITHIN REACH

*Price includes lot&gst. Price, features & plan are subject to change at any time. All plans/designs are the exclusive property of Douglas Homes Ltd.