

QUICK POSSESSION Peyto

87 Waterford Mews
Waterford, Chestermere

Connie Buenaventura

✉ waterford@douglashomes.net

☎ 587.741.0641



1,476 sq ft



3 bedrooms



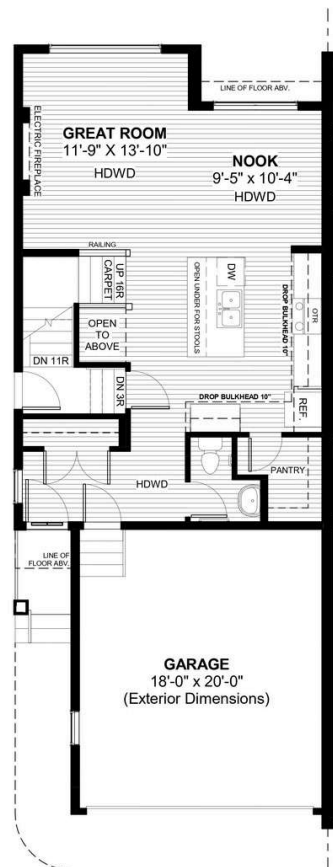
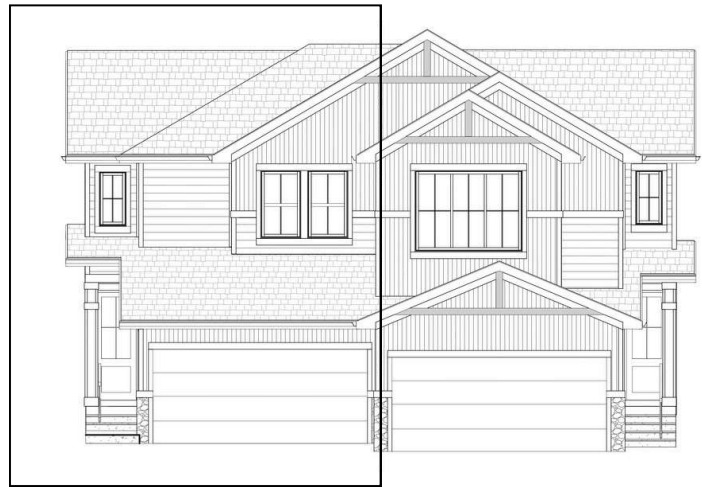
2.5 Bathrooms



23'

FEATURES

Duplex (Left Unit)
Basement Side Entry
9' Main Floor Ceiling
Quartz Countertops
Electric Fireplace
Eng. Hardwood Main Floors
Upper Floor Laundry
Tile to Bath/Laundry
Double Sinks to Ensuite
Sunshine Basement



Price includes lot & GST. Price, features & plan are subject to change at any time.
All plans/designs are the exclusive property of Douglas Homes Ltd.

