

QUICK POSSESSION
BRISBANE

211 Waterford Height
Waterford, Chestermere

Connie Buenaventura

✉ waterford@douglashomes.net

☎ 587.391.7812



1,179 sq ft



3 Bedrooms



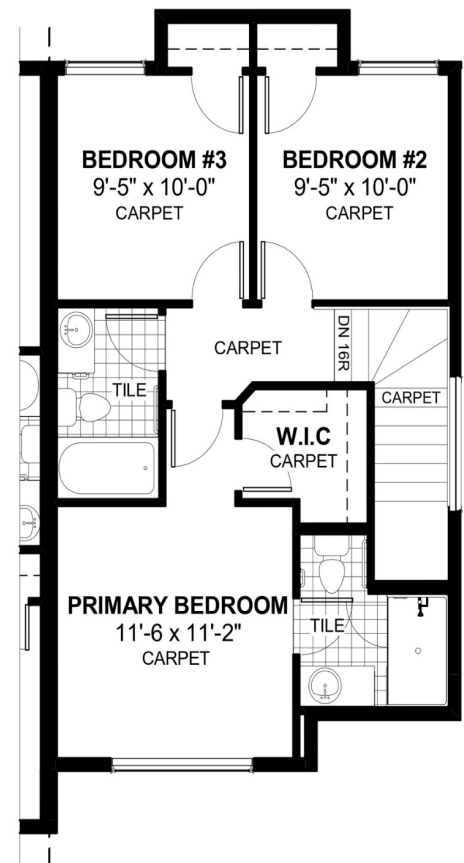
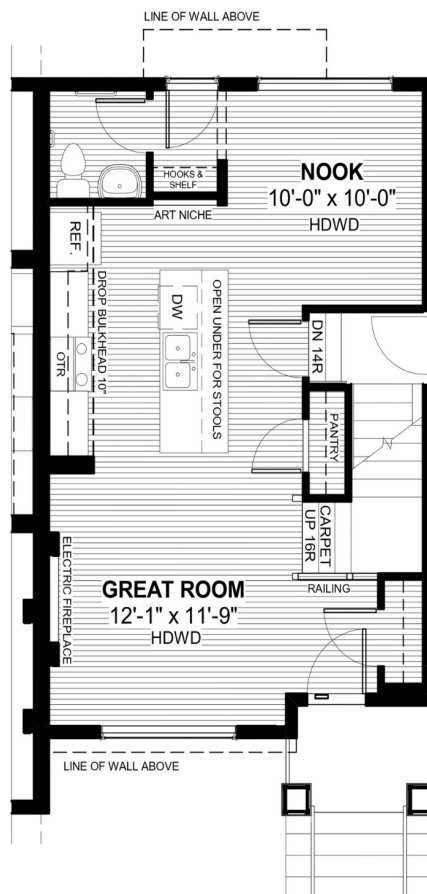
2.5 Bathrooms



20'

FEATURES

- Duplex (Right Unit)
- Basement Side Entry
- Rear Parking Pad
- Electric Fireplace
- Tiles to Bath
- Eng. Hardwood on Main Floor
- Quartz Countertop
- 9' Main Floor Ceiling



Price includes lot & GST. Price, features & plan are subject to change at any time. All plans/designs are the exclusive property of Douglas Homes Ltd.

