

## QUICK POSSESSION MELBOURNE

207 Waterford Height  
Waterford, Chestermere

Connie Buenaventura

✉ waterford@douglashomes.net

☎ 587.391.7812



1,287 sq ft



3 Bedrooms



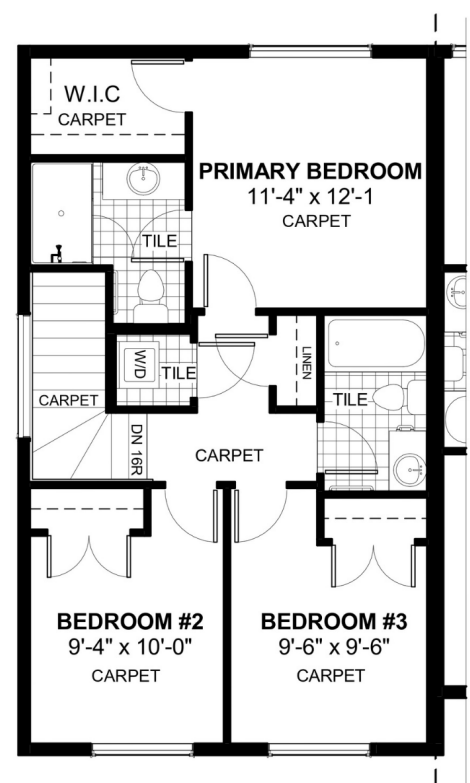
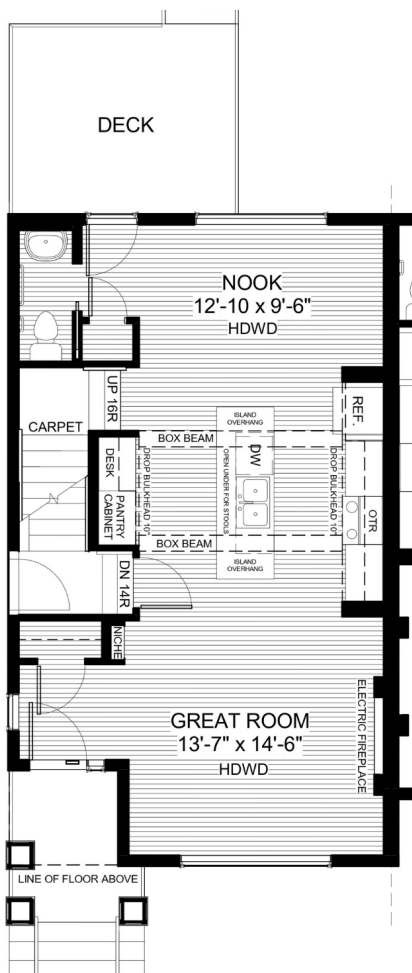
2.5 Bathrooms



20'

### FEATURES

- Duplex (Left Unit)
- Basement Side Entry
- Rear Parking Pad
- Electric Fireplace
- Corner Lot
- Traeted Wood Deck
- Eng. Hardwood on Main Floor
- Quartz Countertop
- 9' Main Floor Ceiling



Price includes lot & GST. Price, features & plan are subject to change at any time.  
All plans/designs are the exclusive property of Douglas Homes Ltd.

