

PELICAN BAY

51 Agate Road • Greystone, Cochrane



1600 sq ft



3 bedrooms



2.5 bathrooms



23'

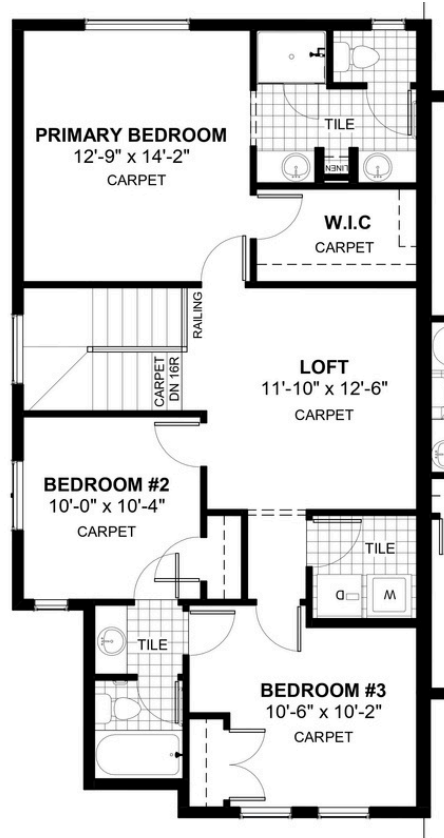


FEATURES

- ✓ Duplex (Left Unit)
- ✓ Basement Side Entry
- ✓ Upper Floor Loft
- ✓ Electric Fireplace
- ✓ 9' Main Floor Ceiling
- ✓ Quartz Countertops
- ✓ Eng. Hardwood Main Floors
- ✓ Walk-in Pantry
- ✓ Tiles to Bath/Laundry
- ✓ Double Vanities to Ensuite



NOTES



DOUGLAS HOMES

REMARKABLE WITHIN REACH

*Price includes lot&gst. Price, features & plan are subject to change at any time. All plans/designs are the exclusive property of Douglas Homes Ltd.

www.douglashomes.net | greystone@douglashomes.net | 403.828.4599