

# ADELAIDE

640 Sora Boulevard SE • Sora, Calgary



1361 sq ft



3 bedrooms



2.5 bathrooms



18'

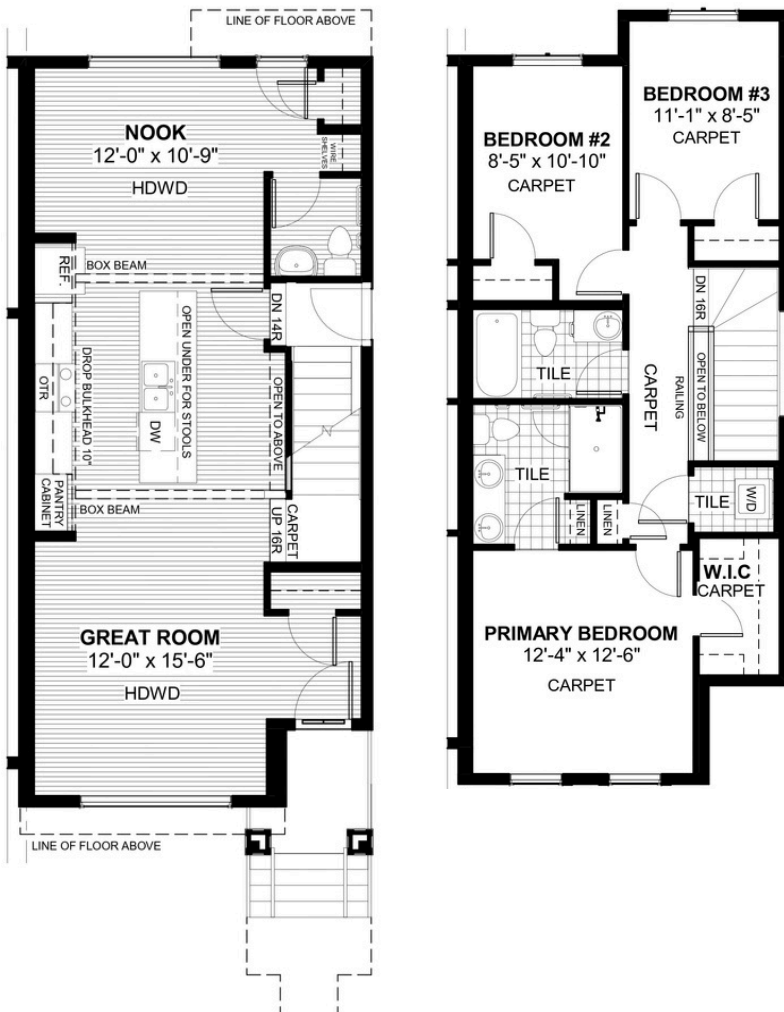


## FEATURES

- ✓ Duplex (Right Unit)
- ✓ Basement Side Entry
- ✓ Rear Parking Pad
- ✓ 9' Main Floor Ceiling
- ✓ Quartz Countertops
- ✓ Large Kitchen Island
- ✓ Upper Floor Laundry
- ✓ Tile to Baths/Laundry
- ✓ Double Sinks to Ensuite
- ✓ Eng. Hardwood Main Floors



## NOTES



**DOUGLAS HOMES**

REMARKABLE WITHIN REACH

\*Price includes lot&gst. Price, features & plan are subject to change at any time. All plans/designs are the exclusive property of Douglas Homes Ltd.