



1,370 sq ft



3 bedrooms



2.5 bathrooms



20'

SHOWHOME FEATURE SHEET



Exterior and Interior Key Features

- Modern Craftsman-style elevation featuring a dynamic mix of horizontal and vertical vinyl siding with cultured stone accents and window grills for added curb appeal.
- ★ High visibility corner lot with upgraded detailing for the side and rear elevations plus additional windows in the primary bedroom.
- 20' x 20' double detached garage.
- Fully landscaped yard with a mulch bed and shrubs in the front.
- Front concrete patio, creating a welcoming outdoor entry space.
- Treated wood rear landing and steps with separation/privacy wall and aluminum railing.
- Wood fencing along the exposed side of the lot.
- Tall 8' high painted fiberglass front door with glass insert and side light.
- French-style back door with transom above for more natural light and enhanced aesthetic.
- Spacious 9' main floor ceiling height with 8' high doors in common areas.
- 8' high undeveloped basement.
- Elegant quartz countertops throughout the home.
- ★ Beautiful engineered hardwood throughout the main floor.
- ★ Tile flooring in the laundry room and upper floor bathrooms.

EXTERIOR and INTERIOR KEY FEATURES

Kitchen

- Kitchen equipped with stainless steel appliances, including a fridge, electric smooth top range, over-the-range microwave and dishwasher.
- Large 9' island with ample seating space on three sides plus a desirable under-mount sink for a cleaner aesthetic.
- Full-height pantry for added storage.
- 42" high upper kitchen cabinets that are finished to the ceiling.
- Increased cabinet height and depth above the fridge.
- Two-tone cabinetry with upgraded painted finishes: Chantilly Lace uppers, Windy City lowers and island.
- Artisanal-look Anthracite matte porcelain tile backsplash.
- V-groove profile cabinetry on both the upper and lower kitchen cabinets.
- Dedicated desk area, also makes a great coffee station or prep space.



Main Floor

- 3 shelf niche in the great room for decorative displays.
- ★ Main floor powder room with a pedestal sink and painted accent wall.
- Cozy electric fireplace in the great room for ambiance and those chilly evenings.
- Contrasting matte black metal handrail brackets in the main stairway.
- ★ Painted accent walls in the nook and great room.
- Built-in bench with hinged lid and storage compartment in the mudroom.

Primary Bedroom

- Primary bedroom comes with a spacious walk-in closet and a window for natural light.
- ★ Ensuite features a large 3' x 5' shower with full height tiled walls and acrylic base, complemented by a feature tile detail in the center.
- Ensuite includes popular dual vanities with undermount sinks and handy linen storage.



★ = Upgrades specific to this Showhome

GLASGOW

342 Sundown Road • Sunset Ridge, Cochrane



1,370 sq ft



3 bedrooms



2.5 bathrooms



20'

SHOWHOME FEATURES CONTINUED

Upper Floor

- Convenient upper floor laundry room designed for a space-saving stacked washer and dryer.
- 4 piece main bath featuring a soaker tub with tiled surround.
- V-groove profile cabinetry in the Windy City palette in the main bath.
- Built-in desk in the upper hallway, ideal for working from home.

Lighting and Electrical Features

Premium light fixtures with additional disc lights in the kitchen and nook.

- 2 pendant lights over the kitchen island.
- ★ Raised TV plugs in the great room and primary bedroom.
- Showhome security system.

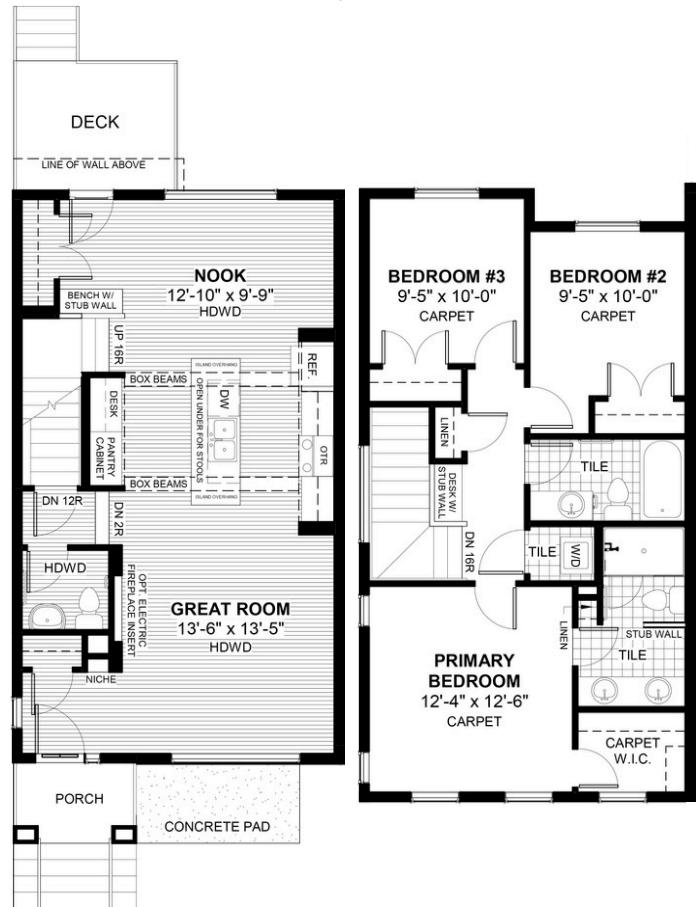
Plumbing and Mechanical Features

- Power-drip humidifier.
- Radon gas removal system rough-in.
- High-efficiency furnace.
- Heat recovery ventilation system.
- High-efficiency electric hot water tank.
- 2 exterior hose bibs.
- Furnace and air duct cleaning prior to possession.

Miscellaneous Showhome Decoration

- ★ Drapery and hardware installed in the great room and primary bedroom.
- ★ Roller shades installed in the great room, nook, upper floor bedrooms, and walk-in closet.

★ = Upgrades specific to this Showhome



CONTACT US



342 Sundown Road, Sunset Ridge, Cochrane



Monday - Thursday: 2:00pm - 8:00pm
Sat, Sun and Holidays: 12:00pm - 5:00pm



Fi Traimany and Nam Traimany



Phone: 587-741-8163
Cell: (Fi) 403-604-2848; (Nam) 403-831-8989



sunsetridge@douglashomes.net



www.douglashomes.net