

**QUICK
POSSESSION**

CLAIRE

8 Waterford Glen, Chestermere

Connie Buenaventura

✉ waterford@
douglashomes.net

☎ 587.390.7812

🏠 1,400 sq. ft.

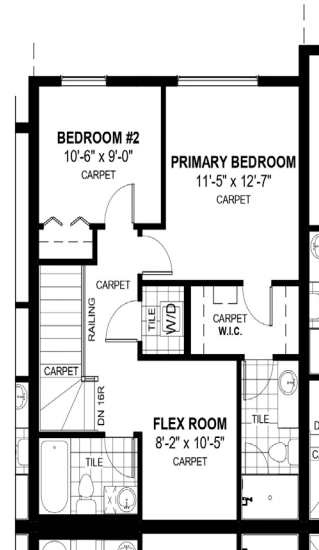
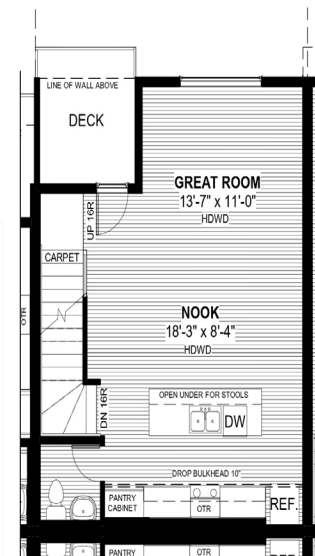
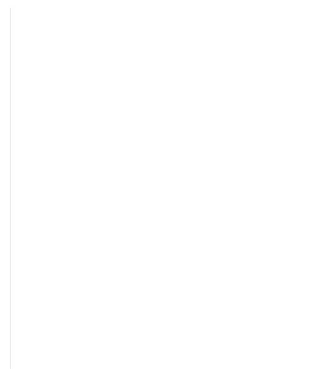
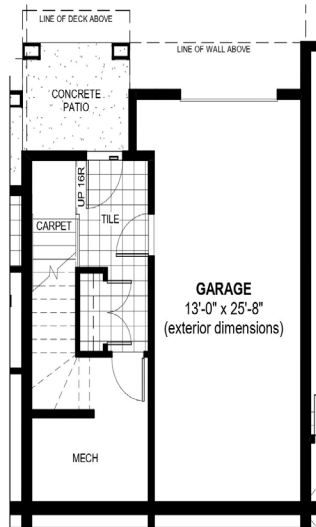
🛏 2 Bedrooms

🚿 2.5 Bathrooms

📏 23'

FEATURES

- Three Storey Townhome
- No Condo Fees
- Single Car Garage
- Upper Floor Flex Room
- 9' Main Floor Ceiling
- Quartz Countertops
- Eng. Hardwood on Main Floor
- Full Landscaping
- Treated Wood Deck
- Upper Floor Laundry



Price includes lot & GST. Price, features & plan are subject to change at any time. All plans/designs are the exclusive property of Douglas Homes Ltd.

