

**QUICK
POSSESSION**
Hamilton

401 Waterford Blvd,
Chestermere

Connie Buenaventura

✉ waterford@douglashomes.net

☎ 587.848.3087



1,286 sq. ft.



3 bedrooms



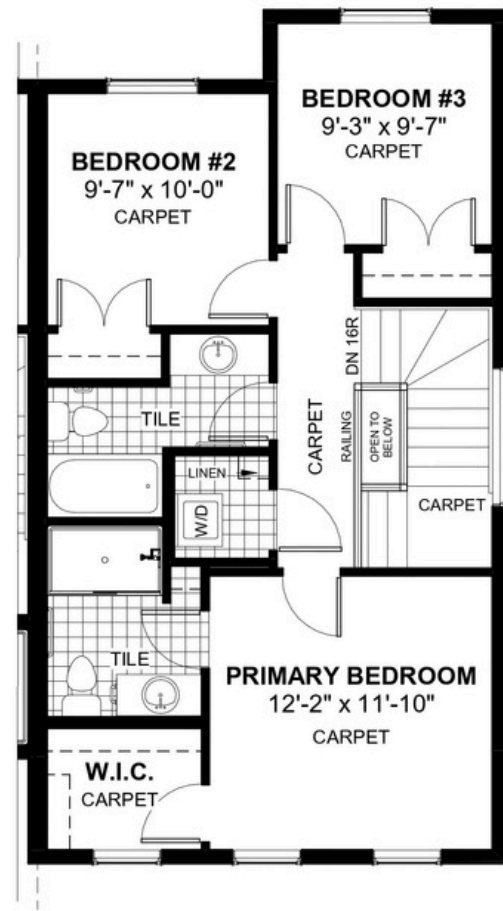
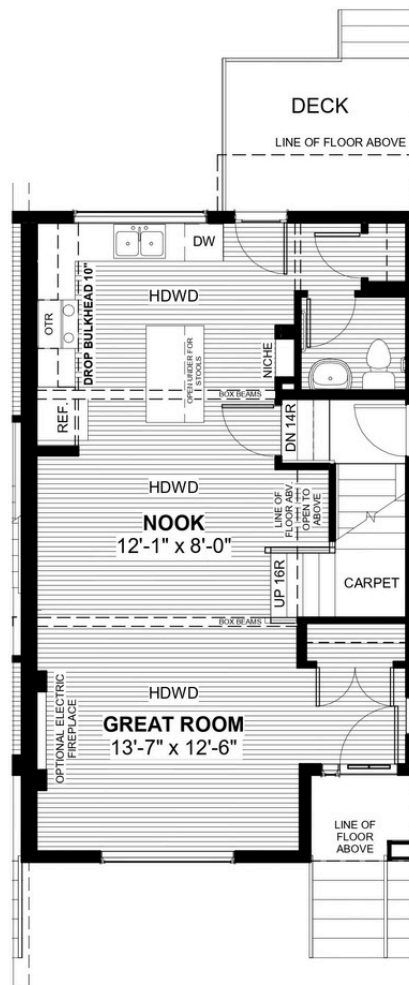
2.5 Bathrooms



20'

FEATURES

- End Unit
- Basement Side Entry
- No Condo Fees
- Rear Garage
- 9' Main Floor Ceiling
- Treated Wood Deck
- Upper Floor Laundry
- Quartz Countertops
- Eng. Hardwood Main Floor
- 9' Main Floor Ceiling
- Walk-In Closet



Price includes lot & GST. Price, features & plan are subject to change at any time.
All plans/designs are the exclusive property of Douglas Homes Ltd.

