

**QUICK
POSSESSION**

MELBOURNE


2081 Cobblespring Ave. SW
Cobblestone Creek, Airdrie

John McLaughlin

✉ cobblestone@
douglasshomes.net

☎ 403.560.4621

 1,287 sq. ft.

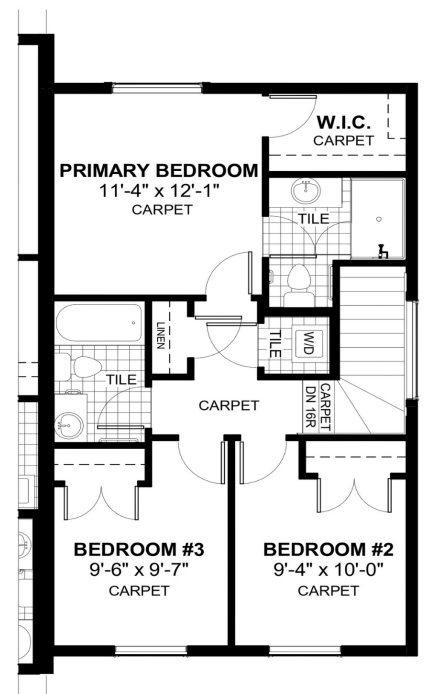
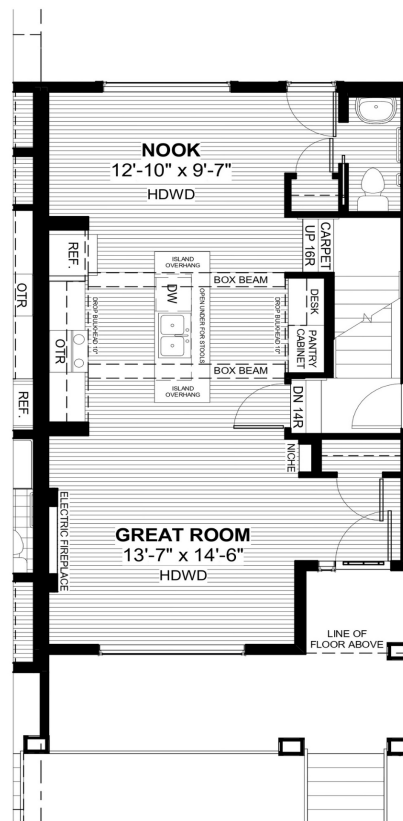
 3 Bedrooms

 2.5 Bathrooms

 20'

FEATURES

- Duplex (Right Unit)
- Full Width Porch
- Basement Side Entry
- Rear Parking Pad
- Electric Fireplace
- 9" Main Floor Ceiling
- Quartz Countertops
- Eng. Hardwood on Main Floor
- Upper Floor Laundry



Price includes lot & GST. Price, features & plan are subject to change at any time. All plans/designs are the exclusive property of Douglas Homes Ltd.

