

# ST. ANDREWS

388 Sora Blvd SE • Sora, Calgary



1291 sq ft



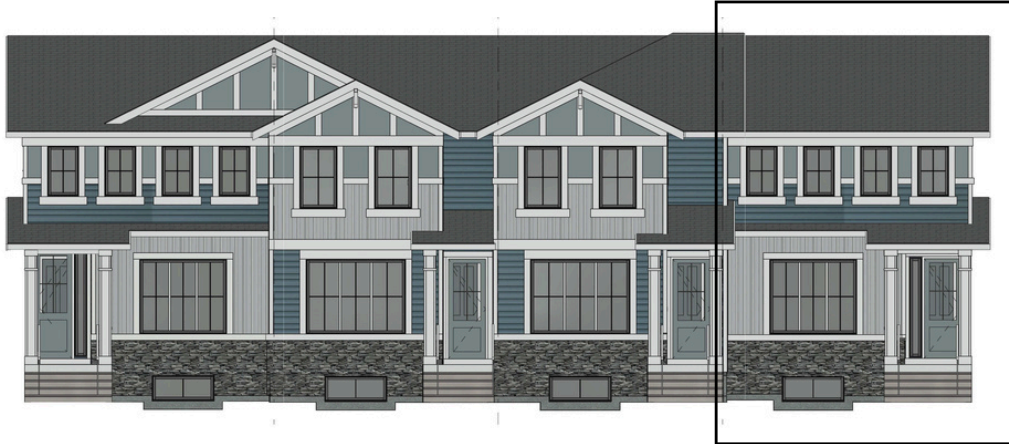
3 bedrooms



2.5 bathrooms

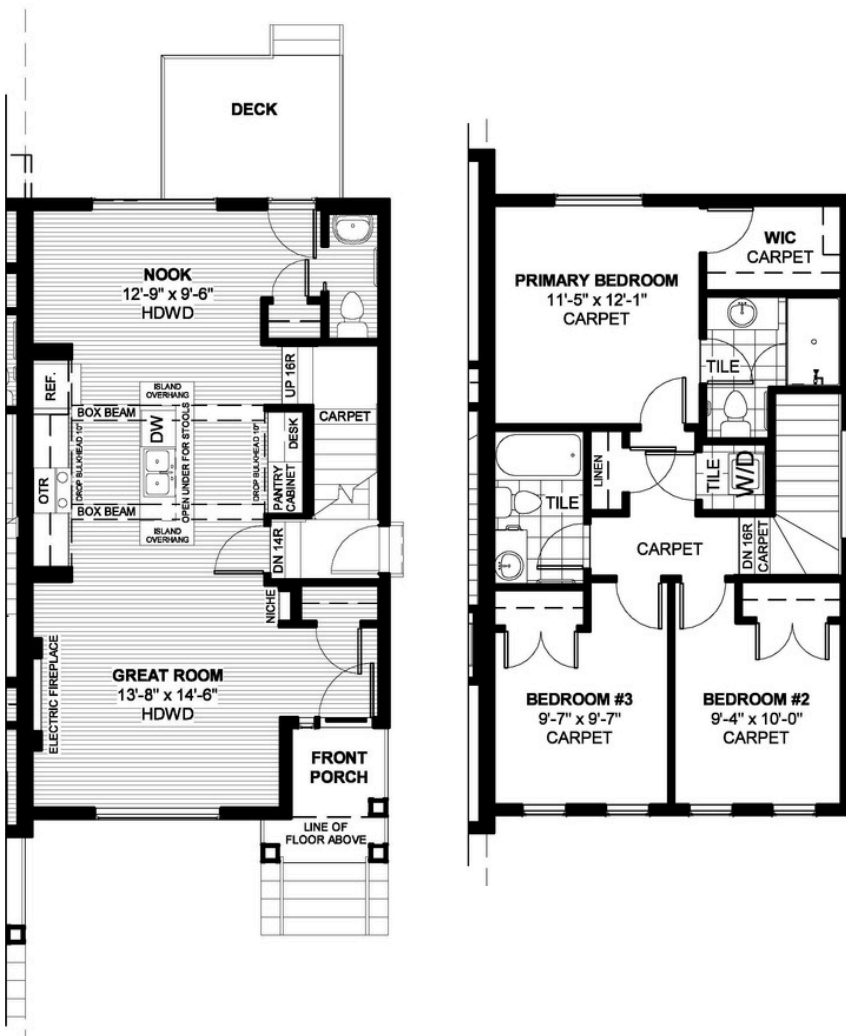


20'



## FEATURES

- ✓ Townhouse - End Unit
- ✓ No Condo Fees
- ✓ Basement Side Entry
- ✓ Detached Double Car Garage
- ✓ Full Landscaping to Front/Back
- ✓ 9' Main Floor Ceiling
- ✓ Rear Treated Wood Deck
- ✓ Electric Fireplace
- ✓ Quartz Countertops
- ✓ Eng. Hardwood Main Floor



**DOUGLAS HOMES**  
REMARKABLE WITHIN REACH

\*Price includes lot&gst. Price, features & plan are subject to change at any time. All plans/designs are the exclusive property of Douglas Homes Ltd.