

**QUICK
POSSESSION**


TOFINO


12 Topaz Place, Cochrane

Derk Patton

✉ greystone@
douglashomes.net

☎ 403-828-4599

 1,698 sq ft.

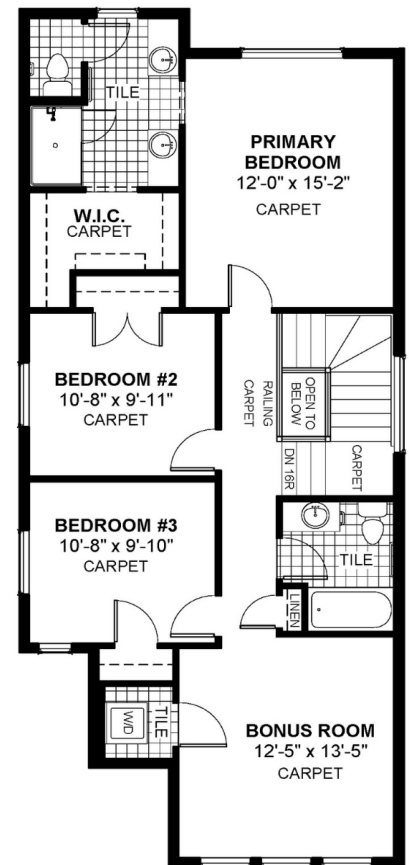
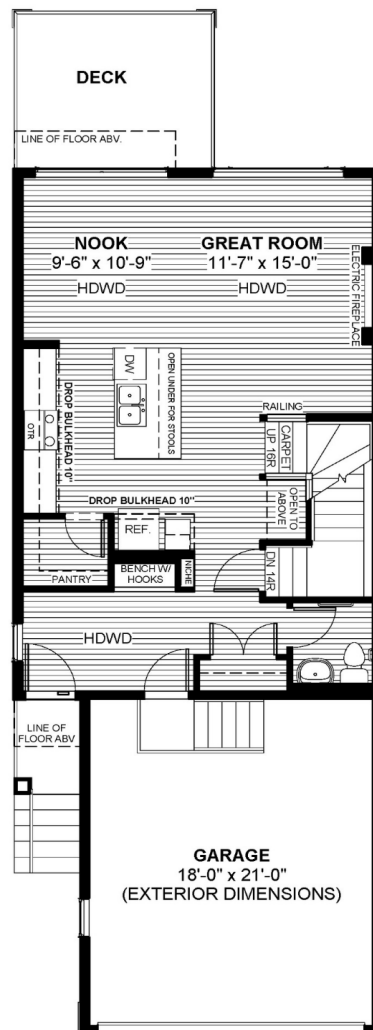
 3 Bedrooms

 2.5 Bathrooms

 22'

FEATURES

- 8' -0" Basement
- Electric Fireplace
- Treated Wood Deck
- Quartz Countertops
- Eng. Hardwood on Main Floor
- Upper Floor Laundry
- Walk-in Closet
- Double Vanities to Ensuite



Price includes lot & GST. Price, features & plan are subject to change at any time. All plans/designs are the exclusive property of Douglas Homes Ltd.

